


COMMON  
GROUNDS



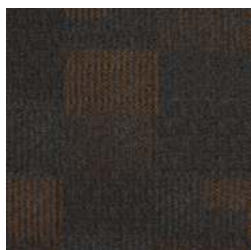


CONSTRUCTION	LOOP
PILE FIBER COMPOSITION	100% Nylon (Polyamide 6)
YARN TYPE	BCF
DYE METHOD	Solution Dyed
PILE WEIGHT	700 g/m <sup>2</sup>
NUMBER OF TUFTS	222780/m <sup>2</sup>
TUFTING GAUGE	1/12"
PRIMARY BACKING	Non-Woven
SECONDARY BACKING	<b>StableShield</b> - 100% Vinyl
OPTIONAL BACKING	<b>Recova</b> -PU Cushion, <b>EcoShield</b> -100% Recycled Vinyl
TILE SIZE	50 cm x 50 cm
PILE HEIGHT	3.0 mm / 5.0 mm
TOTAL PILE HEIGHT	7.0 mm
PILE TREATMENT	INVISTA Anti-Soil Treatment, Anti-Microbial (Optional)
RECOMMENDED INSTALLATION	Quarter Turn or Monolithic

# SPECIFICATIONS



# COLOURLINE



COMMON GROUNDS - 722



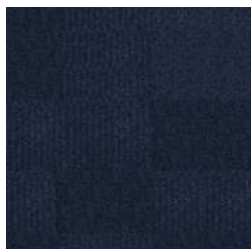
COMMON GROUNDS - 726



COMMON GROUNDS - 748



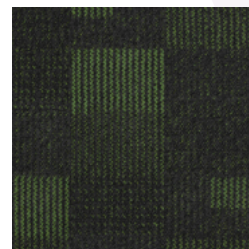
COMMON GROUNDS - 750



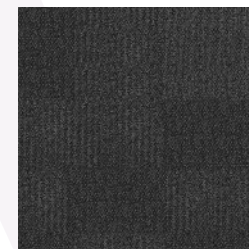
COMMON GROUNDS - 752



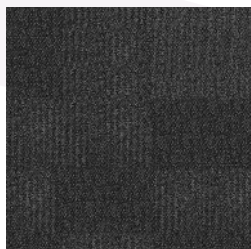
COMMON GROUNDS - 754



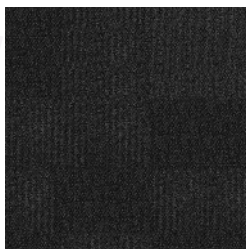
COMMON GROUNDS - 762



COMMON GROUNDS - 772



COMMON GROUNDS - 773



COMMON GROUNDS - 778

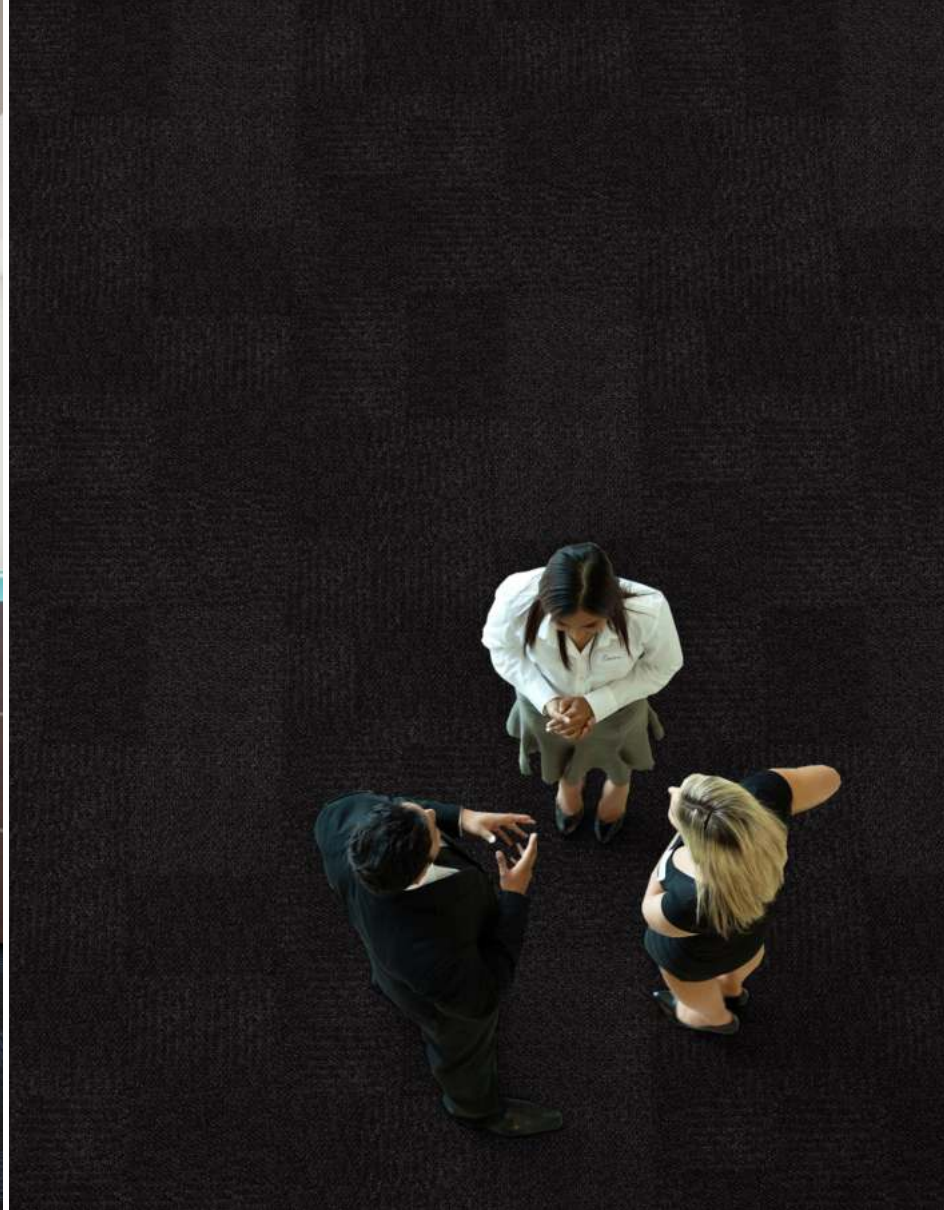


COMMON GROUNDS - 790



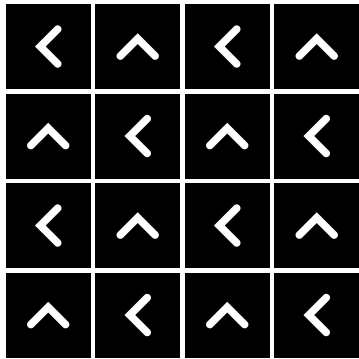




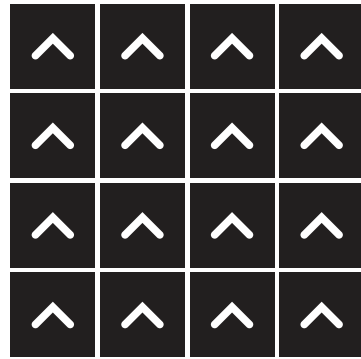


# HOW TO INSTALL

**QUARTER TURN**



**MONOLITHIC**





Standard  
*CARPETS*

[www.standardcarpets.com](http://www.standardcarpets.com)